



C A R E E R O P P O R T U N I T Y

COUNTY OF YOLO, CALIFORNIA

MEDICAL DIRECTOR OF PSYCHIATRY

YOLO COUNTY HEALTH AND HUMAN SERVICES AGENCY (HHSA)



THE YOLO COUNTY HEALTH AND HUMAN SERVICES AGENCY (HHSA) IS SEEKING A MEDICAL DIRECTOR OF PSYCHIATRY to supervise essential mental health providers for the community. This caring, passionate leader will perform integral leadership duties that have a direct impact on the most vulnerable members of the community they serve. The desired candidate will view this position as an exciting opportunity to improve accessibility to mental health services—affecting lives for the better and creating a positive outcome for families. The Medical Director of Psychiatry will collaborate closely with the executive leadership of Yolo County’s Health and Human Services Agency, following the Behavioral Health (BH) System of Care. This position will report to the County Mental Health Director and will oversee approximately 10 full- and part-time employees of the County. In addition, the Medical Director of Psychiatry supports prescribers including nurse practitioners and psychiatrists. *If you are motivated to live your vision and values as a leader in mental health, apply today!*

ANNUAL SALARY: \$296,400–\$360,298 DOE/DOQ

THE COMMUNITY. **YOLO COUNTY, CALIFORNIA, IS A WELCOMING** and progressive community with over 221,000 residents. It is part of the Greater Sacramento metropolitan area and is just a short distance away from Sacramento, Napa, and the San Francisco Bay Area. Yolo County encompasses the vibrant cities of Davis, West Sacramento, Winters, and the County seat of Woodland. Despite being just a short drive from urban centers, Yolo County spans 1,024 square miles of primarily agricultural land—with sprawling wineries, bustling breweries, live theatre venues, and a diverse array of culinary offerings. The City of Davis is home to the University of California, Davis, with a student population of approximately 25,000.

Yolo County has a Mediterranean climate and has gained popularity with tourists for its aesthetically beautiful range of seasons. Visitors and residents alike enjoy well-maintained camping, hiking, and fishing areas, including the Valley Vista Regional Park trails and the Putah Creek Reserve. Residents of Yolo County also enjoy visiting the Davis Farmer's Market, a Saturdays-only event in downtown's central park.



THE COUNTY. **THE COUNTY OF YOLO** was one of the original counties of California, created in 1850 at the time of statehood. The County is governed by a board of five District Supervisors and encompasses four incorporated cities: Davis, West Sacramento, Winters, and Woodland. The County has an approximate total of 1,600 full-time employees across 14 departments, with an approximate budget of \$783M. Its core values include service, performance, integrity, responsibility, innovation, and teamwork, all combined to create a healthy, safe, and vibrant community.

THE DIVISION. THE YOLO COUNTY HEALTH AND HUMAN SERVICES AGENCY (HHSA)

is led by the Agency Director and has a staff of 742 employees and a complex operating budget of approximately \$282M. The HHSA provides a variety of mobile and location-based mental health services, including mental health clinics—with their primary clinic in Woodland and smaller satellite offices in both Davis and West Sacramento.

The Yolo County HHSA carries out its core initiatives of:

- ▶ Ensuring that vulnerable populations have access to mental health services.
- ▶ Supporting foster youth and families' needs.
- ▶ Providing supplies, services, and interventions for the homeless population.
- ▶ Increasing food security and maintaining emergency food storage for residents.

Above all, HHSA leadership values integrative care to effectively meet the distinct mental, physical, and emotional needs of the community.

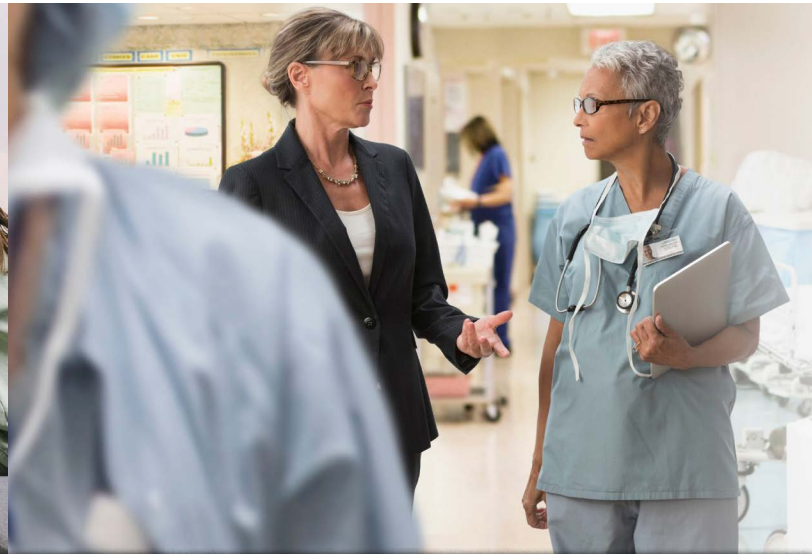
[LEARN MORE ABOUT THE HHSA HERE](#)

THE JOB. THE MEDICAL DIRECTOR OF PSYCHIATRY

has ultimate responsibility for the County's medical and psychiatric services. This role ensures the quality of medical practices and conducts essential chart reviews. In this position, the Medical Director will be able to provide direct client care 50% of the time, with 50% of the role being dedicated to Departmental administration. For direct care services, Telehealth may be used in addition to appointments at HHSA's on-site mental health clinics. This position is responsible for ensuring that prescribers—including internal and external psychiatrists and nurse practitioners—are wholly supported in their efforts to work with the public. The Medical Director also provides oversight for the development of new and current Department programs and services.



THE IDEAL CANDIDATE. THE IDEAL CANDIDATE FOR **MEDICAL DIRECTOR OF PSYCHIATRY** is a highly detailed professional with prior knowledge of county mental health systems. The next Medical Director should be a confident decision-maker who will be excited and motivated to lead the medical community. Successful candidates will bring a combination of visionary thinking and administrative oversight. A highly desirable candidate for this position will be dually experienced in both Psychiatry and Alcohol & Drug Addiction Services. The Medical Director of Psychiatry should have a strong understanding of treating vulnerable populations, as well as a passion for improving access to these vital services. They should also take a deeply empathetic approach to the intersection of mental health and addiction care.



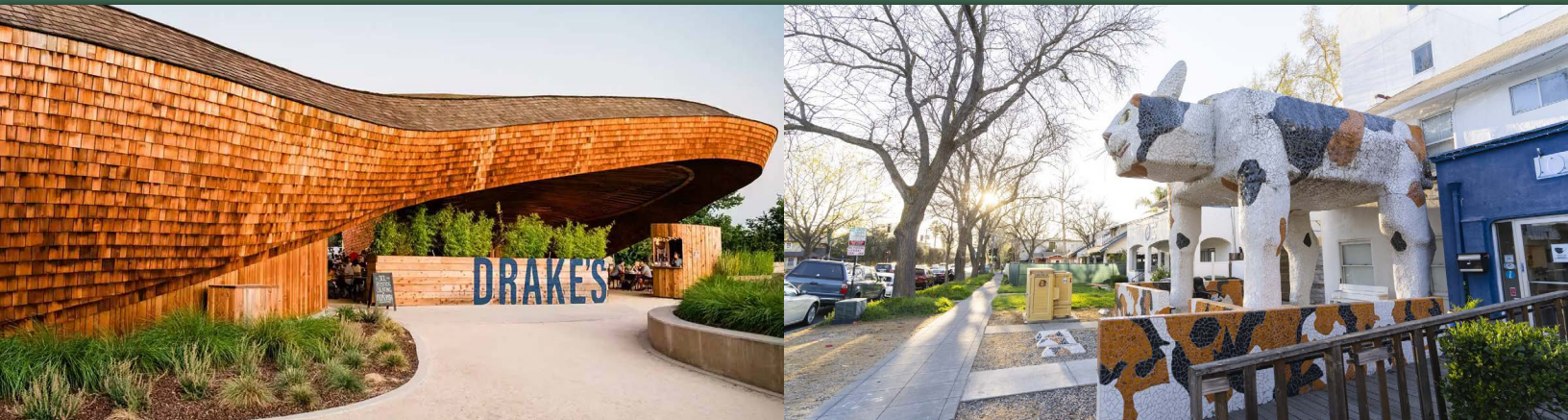
The ideal candidate will also...

- ▶ Have expertise in drug and alcohol dependency programs,
- ▶ Possess an interest in forensic community treatment,
- ▶ Understand the complexities of managing prescribers and staff, and
- ▶ Possess a desire to collaborate with other departments.

MINIMUM QUALIFICATIONS

- ▶ One (1) year of full-time, paid professional experience as an administrator in a public or private psychiatric or rehabilitative counseling agency.
- ▶ Certification by the American Board of Psychiatry and Neurology or ability to obtain certification within one (1) year from the date of appointment.
- ▶ Possession of a valid Physician's and Surgeon's Certificate issued by the Board of Medical Examiners of the State of California.
- ▶ A current Drug Enforcement Association (DEA) license.
- ▶ A valid California class C driver's license or the ability to arrange necessary and timely transportation for field travel.

A complete background investigation is required; a felony or misdemeanor conviction may be a disqualifying factor from employment.



UPCOMING PROJECTS, CHALLENGES, & OPPORTUNITIES

- ▶ The Medical Director of Psychiatry will have the ability to oversee the implementation of a groundbreaking new Crisis Now response model—providing support to individuals in crisis and helping to reduce hospitalizations and incarcerations.
- ▶ The Medical Director of Psychiatry will have the opportunity to invest resources in the mental wellness of the Department team, ultimately leading to a stronger departmental unit.

SALARY & BENEFITS. An annual salary of \$296,400–\$360,298, plus a generous compensation package.

\$10,000 SIGN-ON INCENTIVE

MEDICAL, DENTAL, AND VISION INSURANCE

CALPERS RETIREMENT

DEFERRED COMPENSATION PLANS

FLEXIBLE SPENDING ACCOUNTS

EMPLOYEE ASSISTANCE PROGRAM

VACATION, SICK, AND ADMINISTRATIVE LEAVE

HOLIDAYS & FLOATING HOLIDAYS

DISABILITY PLANS

SOCIAL SECURITY & MEDICARE

This position may be eligible for a robust loan reimbursement Program that can be discussed with the candidate.



HOW TO APPLY

Apply immediately for consideration at:

WBCP JOB BOARD



**CLICK
BUTTON**

Interviews will be conducted as ideal candidates are identified.

Please contact your recruiter, Wendi Brown, with any questions: **wendi@wbcpinc.com**

541.630.0376 (direct) | **866.929.9227** (toll-free)